



MONEGHETTI  
MINERALS

SEPTEMBER 2021

# QUARTERLY ACTIVITIES REPORT

---



## INDUSTRY

# GOLD MARKET

The gold price averaged US\$1,789.50 an ounce for the quarter ended 30 September 2021 (Q3, the Period), marginally lower than the prior quarter period average.

Seeking Alpha<sup>1</sup> described the lacklustre gold price performance over the Period as having a bright start, flat middle and weak ending.

Historical gold price performance during the Period:



Source: Gold.org

A sharp reversal in bond yields and rising US dollar, both placed downward pressure on the gold price. Gold's inverse relationship to the dollar and yields held true during the quarter.

Jeff Clark, Senior Analyst with Goldsilver.com stated in his review of Q3 gold performance that the most likely path ahead is one where gold continues to offer a meaningful and necessary hedge and that another set of record high prices in the next run seems highly likely.

Gold price ended Q3 1% lower.

<sup>1</sup> Seeking Alpha is a crowd-sourced content service for financial markets.







## INDUSTRY

## VISION & MISSION

---

Moneghetti's vision is to become the first recognised premium, ethical, global gold brand.

The Company's mission is to bring responsibly sourced gold products to stakeholders globally in a value enhancing and transparent manner.

The Responsibly Sourced Gold initiative will focus on building best practice in the following areas;

### Sustainability

The Company is committed to doing its part to protect the planet, to respect the environment and the communities in which it operates and to serve stakeholders while building value for shareholders in its hunt for gold. Moneghetti's commitment to sustainability is focused on these six core areas reflected by its 'Responsibly Sourced Gold' initiative, which is revisited and expanded on regularly.

During the Period, the Company commenced discussions with a senior environmental manager referred by Nevada Gold Mines. This consultant is highly qualified in the region and will be helpful in establishing Moneghetti's initiatives in the areas of sustainability, permitting and indigenous relations in Nevada while the internal management team is being developed.

### Clean mining

The Company continued to investigate the use of non-toxic methods for gold production. Moneghetti is an early stage explorer and while gold production is an aspiration, it is never too early to contemplate greener production methods and build a commitment to environmental sensitivity into the culture of the company as it grows.

The Company is reviewing the work by the Commonwealth Scientific and Industrial Research Organisation (CSIRO) that has developed a safe, cyanide and mercury-free process for recovering gold. CSIRO has previously worked to tailor a niche cyanide-free solution to Barrick's Goldstrike Mine in Nevada that has been in operation since 2014.



---

## Strong governance

The board and management of Moneghetti are establishing exemplary governance systems to promote investor confidence.

During the Period, the Company finalised various governance policies as part of its transition from private to public company. The Company's charters and policies can be viewed in full on the website in the Corporate section under the Governance tab.

Embracing good governance is part of the Company's culture, noting that 75% of Moneghetti's board of directors hold governance qualifications, two having graduate diplomas in corporate governance and the Chair also being a Fellow of the Governance Institute of Australia.

## Community and stakeholder engagement

Moneghetti launched its Workplace Giving Program, which will incorporate voluntary donations from Directors' fees, providing an opportunity to financially support communities in which the Company operates to make a positive difference.

In July, the Company launched its Digging Deep Workplace Giving Program as part of its ongoing commitment to environmental, social and governance (ESG) initiatives, for which workplace giving supports in the area of social impact.



During the Period, the Company announced the Einstein-First Project as a preferred recipient of its Digging Deep Workplace Giving Program. The Einstein-First Project teaches the fundamental concepts of modern physics to school students and works to improve STEM involvement in the classroom.

Supporting the Company's commitment to stakeholder communications, in September Managing Director Ms Anna Nahajski-Staples and Technical Director Dr Karen Lloyd conducted their first podcast with Equity Mates Media 'Talk Money to Me' hosted by finance professionals Candice Bourke and Felicity Thomas. Equity Mates Media is a top finance and investing network for young Australians and Talk Money to Me is a new wealth podcast making sense of complex subjects for everyone from seasoned veterans to first time investors.



---

## Upholding human rights

Safety, respect, gender equality, inclusion, ethics and integrity are held to the utmost importance in all of Moneghetti's business practices and business decisions.

Adopting the United Nations SDGs has provided a framework for which Moneghetti can work towards.

The Sustainable Development Goals (SDGs), also known as the Global Goals, were adopted by the United Nations in 2015 as a universal call to action to end poverty, protect the planet, and ensure that by 2030 all people enjoy peace and prosperity.

The 17 SDGs are integrated — they recognise that action in one area will affect outcomes in others, and that development must balance social, economic and environmental sustainability.

## Respect for the environment

The Company continuously works to minimise its impact on the environment and believes education and early adoption of sustainable gold mining methods will serve Moneghetti and its shareholders well in the future.

Moneghetti is reviewing various environmental charities involved in the communities in which it will be exploring as potential preferred recipients of its Workplace Giving Program.





## PROJECTS

# NEVADA PROJECTS

## Ecru

The Ecru project comprises 112 unpatented contiguous lode mining claims located to the North of the Pipeline-Cortez Hills-Goldrush and Robertson deposit cluster on the famous Cortez/Battle Mountain Trend in Lander County, Nevada.

In March 2021, Moneghetti announced that it is optioning into the Ecru project, located on the famous Battle Mountain/Cortez trend in Lander County, from Orogen Royalties (TSXV: OGN, Orogen) (Figure 1).

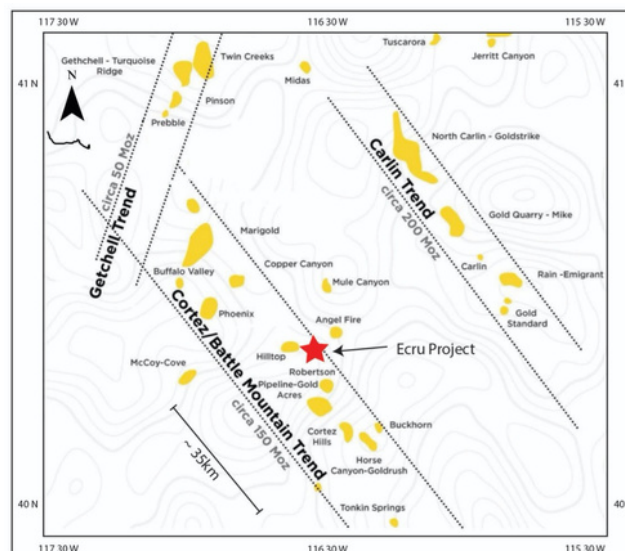


Figure 1: Ecru Project Location on the Cortez-Battle Mountain Trend





During the Period, the Company expanded Ecrú to include mineral rights to new highly prospective ground through a sub-lease arrangement with Barrick and Newmont's joint venture company, Nevada Gold Mines (NGM).

Under the terms of the agreement, Orogen will add the minerals rights adjacent to Ecrú via a sub-lease agreement between their subsidiary company, Renaissance Exploration Inc and NGM. The NGM Lease is within the area of interest under the existing earn-in terms of the Ecrú Option Agreement with Orogen, enabling Moneghetti to expand its exploration area at Ecrú by approximately 1120 acres (~4.5km<sup>2</sup>).

The Company is in the process of securing an agreement with local drillers to commence a high-impact diamond drill program at Ecrú in H1 2022, immediately following the IPO.

## Dolly Varden

Dolly Varden is comprised of 255 unpatented contiguous lode mining claims located a 2.5 hour drive southeast of the mining hub of Elko. There has been limited modern exploration conducted at the project, which was identified by Bear Creek Mining in the early 1960s. The project fits with Moneghetti's exploration strategy to acquire a combination of drill-ready Carlin-style gold projects with lower-risk, shallow, high-grade and equally scalable opportunities for a well-rounded portfolio.

In September 2020, the project vendors conducted a rock chip sampling program at Dolly Varden that delivered encouraging results. Moneghetti submitted 20 rock chip samples, that the project vendors sampled, to ALS Laboratories in Reno for 50-element Aqua Regia Inductively Coupled Plasma (ICP) Spectroscopy and Gold Fire Assaying, resulting in grades up to 21g/t Au in one sample and three samples assayed 4g/t Au.

During the Period, Moneghetti commenced a magnetic geophysical survey to locally target the Northwest trending vein set, which will be followed up with shallow drilling in coming months.

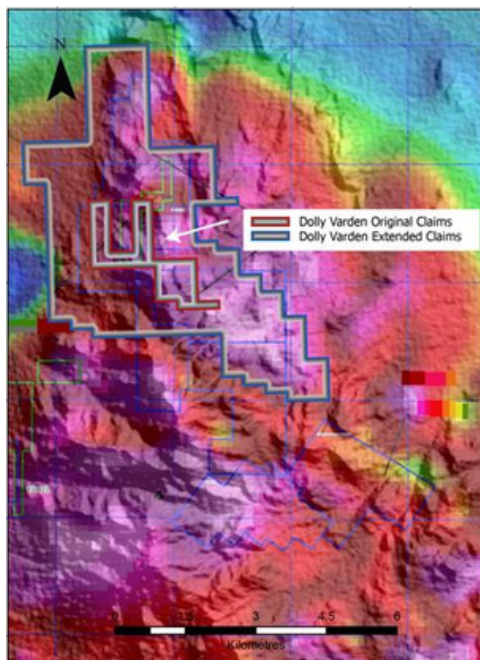


Figure 2: Dolly Varden Tenement Map





## PROJECTS

# WEST AUSTRALIAN PROJECT

## Bedonia East

The Bedonia East project comprises four granted Exploration Licences and one Exploration Licence under application in the Norseman area of WA. Bedonia East is geologically located on the margin between the Yilgarn Craton and the younger Proterozoic rocks of the Albany-Fraser orogeny.

There were no substantive exploration activities at Bedonia East during the quarter.

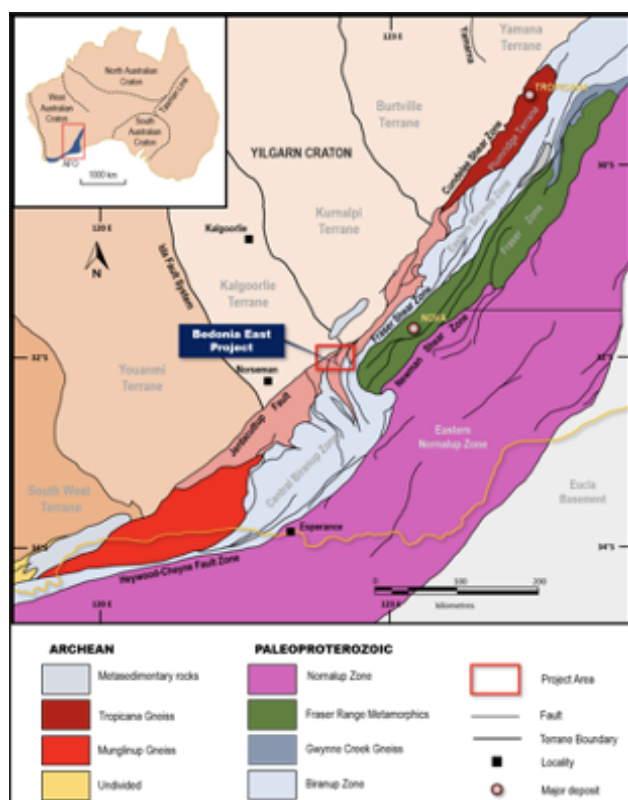


Figure 3: Bedonia Project Location







Q3 2021

## CORPORATE

---

During the Period, the Company worked on building its in-country team in the US and intends to finalise and announce the appointment of an Exploration Manager (North America) this quarter.

The cash balance for the company as at 30 September 2021 was \$1,377,665.

On 9 July 2021, the Company closed its pre-IPO seed raising of \$2,000,000, approving the issue of 10,526,316 new shares at \$0.19 a share. Moneghetti is proud to report that approximately 30% of its current share register consists of female investors.

In Q4, the Company will be presenting virtually at the Precious Metals Summit (Europe) on November 15-16, 2021. The Precious Metals Summit provides a quality opportunity to introduce Moneghetti to the global community of institutional and private investors as well as sell-side representatives.

Additionally, the Company commenced planning for trading over the counter (OTC) in 2022. The OTC Markets Group, an American financial market, operates some of the most well-known networks, such as the OTCQX, the OTCQB and the Pink Open Market. Although OTC networks are not formal exchanges such as the NYSE, they still have eligibility requirements.

## Announcements

July 13, 2021	Moneghetti to explore Barrick Newmont ground in Nevada
July 25, 2021	Moneghetti Minerals launches 'Digging Deep' Workplace Giving Program
July 30, 2021	Moneghetti Announces Inaugural Quarterly Activities Report Pre-IPO
August 30, 2021	Moneghetti commences exploration program in Nevada



---

Q3 2021

## TENEMENTS

---

Appendix [A] is submitted with respect to the mining tenements held, and their location by the Company and its controlled entities at the end of the quarter.

### COMPETENT PERSON'S STATEMENTS

The information in this report that relates to Exploration Results, Mineral Resources or Ore Reserves is based on information compiled by Dr Karen Lloyd. Dr Lloyd is the Technical Director of the Company. Dr Lloyd has sufficient experience which is relevant to the style of mineralisation and type of deposit under consideration and to the activity undertaken to qualify as a Competent Person as defined in the 2012 Edition of the 'Australasian Code for Reporting of Exploration Results, Mineral Resources and Ore Reserves'. Dr Lloyd consents to the inclusion in this report of the matters based on their information in the form and context in which it appears

### FORWARD-LOOKING STATEMENTS

This announcement may contain certain "forward-looking statements" which may not have been based solely on historical facts, but rather may be based on the Company's current expectations about future events and results. Where the Company expresses or implies an expectation or belief as to future events or results, such expectation or belief is expressed in good faith and believed to have reasonable basis. However, forward looking statements are subjected to risks, uncertainties, assumptions and other factors, which could cause actual results to differ materially from future results expressed, projected or implied by such forward looking statements. Such risks include, but are not limited to resource risk, metals price volatility, currency fluctuations, increased production costs and variances in ore grade or recovery rates from those assumed in mining plans, as well as political and operational risks in the Countries and States in which we operate or sell product to, and governmental regulation and judicial outcomes. For a more detailed discussion of such risks and other factors, see the Company's annual reports, as well as the Company's other filings. Readers should not place undue reliance on forward looking information. The Company does not undertake any obligation to release publicly any revisions to any "forward-looking statements" to reflect events or circumstances after the date of this announcement, or to reflect the occurrence of unanticipated events, except as may be required under applicable securities laws.



## APPENDIX A: DOLLY VARDEN EXPLORATION RESULTS - JORC TABLE 1 REPORTING

### Section 1: Sampling techniques and data

Criteria	JORC Code explanation	Commentary
Sampling techniques	Nature and quality of sampling (e.g. cut channels, random chips, or specific specialised industry standard measurement tools appropriate to the minerals under investigation, such as down hole gamma sondes, or handheld XRF instruments, etc). These examples should not be taken as limiting the broad meaning of sampling.	20 Rock chip samples were collected by random chip sampling on outcropping quartz with a geological hammer of about fist size material to make a collective sample weight of about 0.5-2kg.
	Include reference to measures taken to ensure sample representivity and the appropriate calibration of any measurement tools or systems used.	Rock material that comprised the samples were selected randomly without bias to material appearance to give an accurate representation of the sample being collected.
	Aspects of the determination of mineralisation that are Material to the Public Report. In cases where 'industry standard' work has been done this would be relatively simple (e.g. 'reverse circulation drilling was used to obtain 1 m samples from which 3 kg was pulverised to produce a 30 g charge for fire assay'). In other cases more explanation may be required, such as where there is coarse gold that has inherent sampling problems. Unusual commodities or mineralisation types (e.g. submarine nodules) may warrant disclosure of detailed information	Samples were dried, crushed with a 500g split pulverised (total prep). Samples were analysed using a 30-element aqua regia digest ICP/OES and ICP/MS (Code ME-MS41) and gold by fire assay with an ICP/AES finish (Code Au-ICP22 with Au-GRA22 check). Additional copper analysis was undertaken using Cu-OG46.





Drilling techniques	Drill type (e.g. core, reverse circulation, open-hole hammer, rotary air blast, auger, Bangka, sonic, etc) and details (e.g. core diameter, triple or standard tube, depth of diamond tails, face-sampling bit or other type, whether core is oriented and if so, by what method, etc).	No drilling is reported.
Drill sample recovery	Method of recording and assessing core and chip sample recoveries and results assessed.	No drilling is reported.
	Measures taken to maximise sample recovery and ensure representative nature of the samples.	No drilling is reported.
	Whether a relationship exists between sample recovery and grade and whether sample bias may have occurred due to preferential loss/gain of fine/coarse material.	No drilling is reported.
Logging	Whether core and chip samples have been geologically and geotechnically logged to a level of detail to support appropriate Mineral Resource estimation, mining studies and metallurgical studies.	No drilling is reported.
	Whether logging is qualitative or quantitative in nature. Core (or costean, channel, etc) photography.	No drilling is reported.
	The total length and percentage of the relevant intersections logged.	No drilling is reported.



Sub-sampling techniques and sample preparation	If core, whether cut or sawn and whether quarter, half or all core taken.	No drilling is reported.
	If non-core, whether riffled, tube sampled, rotary split, etc and whether sampled wet or dry.	No drilling is reported.
	For all sample types, the nature, quality and appropriateness of the sample preparation technique.	Samples were dried, crushed with a 500g split pulverised (total prep). The Company considers this to be a reasonable preparation method. No sub-sampling was undertaken and no drilling is reported.
	Quality control procedures adopted for all sub-sampling stages to maximise representivity of samples.	No sub-sampling was undertaken.
	Measures taken to ensure that the sampling is representative of the in situ material collected, including for instance results for field duplicate/second-half sampling.	No duplicate or second-half sampling was undertaken.
	Whether sample sizes are appropriate to the grain size of the material being sampled.	The sample sizes are considered appropriate for quartz material collected and the assay methods utilised.
Quality of assay data and laboratory tests	The nature, quality and appropriateness of the assaying and laboratory procedures used and whether the technique is considered partial or total.	Samples were dried, crushed with a 500g split pulverised (total prep). Samples were analysed using a 30-element aqua regia digest ICP/OES and ICP/MS (Code ME-MS41) and gold by fire assay with an ICP/AES finish (Code Au-ICP22 with Au-GRA22 check). Additional copper analysis was undertaken using Cu-OG46: This was undertaken at ALS Laboratories in Nevada which has an appropriate quality certification. The technique is considered to be a total assay method which is reasonable for the reported of rock chip sampling assay results



	For geophysical tools, spectrometers, handheld XRF instruments, etc, the parameters used in determining the analysis including instrument make and model, reading times, calibrations factors applied and their derivation, etc.	The use of geophysical methods is not reported.
	Nature of quality control procedures adopted (e.g. standards, blanks, duplicates, external laboratory checks) and whether acceptable levels of accuracy (i.e. lack of bias) and precision have been established.	No standards or blanks were inserted into the 20 rock chip sample program.  The laboratory used has suitable quality accreditation. No accuracy or precision levels have been established.
Verification of sampling and assaying	The verification of significant intersections by either independent or alternative company personnel.	No drilling is reported.
	The use of twinned holes.	No drilling is reported.
	Documentation of primary data, data entry procedures, data verification, data storage (physical and electronic) protocols.	Primary data (samples location points) were recorded by handheld GPS. All digital assay data undergo verification before being uploaded into the digital project database.
	Discuss any adjustment to assay data.	No adjustments were made to the assay data. All data is reported to the second decimal place.
Location of data points	Accuracy and quality of surveys used to locate drillholes (collar and down-hole surveys), trenches, mine workings and other locations used in Mineral Resource estimation.	A hand held GPS was used to record the rock chip sample location points.





	Specification of the grid system used.	
	Quality and adequacy of topographic control.	The hand held GPS is considered to be a reasonable topographic control for the rock chip samples reported.
Data spacing and distribution	Data spacing for reporting of Exploration Results.	Random rock chip sampling was undertaken.
	Whether the data spacing and distribution is sufficient to establish the degree of geological and grade continuity appropriate for the Mineral Resource and Ore Reserve estimation procedure(s) and classifications applied.	The data spacing and distribution of the rock chip samples is not sufficient to establish the degree of geological and grade continuity appropriate for any Mineral Resource estimates.
	Whether sample compositing has been applied.	No sample compositing was applied.
Orientation of data in relation to geological structure	Whether the orientation of sampling achieves unbiased sampling of possible structures and the extent to which this is known, considering the deposit type.	No orientated sampling was undertaken, and no drilling is reported.
	If the relationship between the drilling orientation and the orientation of key mineralised structures is considered to have introduced a sampling bias, this should be assessed and reported if material.	No drilling is reported.
Sample security	The measures taken to ensure sample security.	Chain of custody is documented. Rejects were not retained.
Audits or reviews	The results of any audits or reviews of sampling techniques and data.	No audits have been undertaken as audits and reviews are not considered to be material at this stage of exploration.



## Section 2: Reporting of Exploration Results

Criteria	JORC Code explanation	Commentary
Mineral tenement and land tenure status	Type, reference name/number, location and ownership including agreements or material issues with third parties such as joint ventures, partnerships, overriding royalties, native title interests, historical sites, wilderness or national park and environmental settings.	The Company has entered into an option agreement with the Dolly Varden Vendors pursuant to which the Company (through its wholly owned subsidiary, Lamarck) has an option to acquire 100% of the legal and beneficial interest in 30 of the claims (Dolly Varden Claims) comprising the Dolly Project (Dolly Varden Option Agreement). In February 2021, Lamarck engaged a consulting geologist to stake and register an additional 225 claims (Dolly Varden Extended Claims) surrounding and contiguous to the Dolly Varden Claims, for a total of 255 claims. The Dolly Varden Extended claims fall within the Area of Influence (AOI) noted in the Dolly Varden Option Agreement. Further information is given in the Prospectus.
	The security of the tenure held at the time of reporting along with any known impediments to obtaining a licence to operate in the area.	Information relating to the status of the tenure at the date of the Offer is given in the Prospectus. There are no known impediments to obtaining a licence to operate in the project area.
Exploration done by other parties	Acknowledgment and appraisal of exploration by other parties.	<p>Historical exploration on the tenure is limited to geochemical sampling and regional geophysics.</p> <p>The 20 rock chip samples reported formed part of the Company's investment due diligence into the project.</p>



Geology	Deposit type, geological setting and style of mineralisation.	<p>Dolly Varden is located within the Dolly Varden mountains. Permian aged limestone has been intruded by a Mesozoic aged granite pluton and younger Cainozoic (Tertiary) ignimbrite flows (resulting from volcanic eruption). Major faults trend north-south including thrust and reverse faulting and a subordinate set of northeast striking faults. These offset the ignimbrites meaning the fault episode is probably late Cainozoic in age.</p> <p>Mineralisation is associated with quartz veins and hematite stained chalcedonic and magnetic breccias that intersect the granite pluton. Specifically, breccia mineralisation occurs at the margins of the pluton, hosting gold-bismuth quartz vein stockworks and sheeted veins with local disseminated pyrite and variable hematite and goethite.</p>
Drill hole Information	<p>A summary of all information material to the understanding of the exploration results including a tabulation of the following information for all Material drill holes:</p> <ul style="list-style-type: none"> <li>• easting and northing of the drill hole collar</li> <li>• elevation or RL (Reduced Level)</li> <li>• elevation above sea level in metres) of the drill hole collar</li> <li>• dip and azimuth of the hole</li> <li>• down hole length and interception depth hole length.</li> </ul>	No drilling is reported.





Data aggregation methods	In reporting Exploration Results, weighting averaging techniques, maximum and/or minimum grade truncations (e.g. cutting of high grades) and cut-off grades are usually Material and should be stated.	No weighted averages or cut-off grades were used.
	Where aggregate intercepts incorporate short lengths of high grade results and longer lengths of low grade results, the procedure used for such aggregation should be stated and some typical examples of such aggregations should be shown in detail.	No intercepts or drilling is reported.
	The assumptions used for any reporting of metal equivalent values should be clearly stated.	No metal equivalents are reported
Relationship between mineralisation widths and intercept lengths	These relationships are particularly important in the reporting of Exploration Results. If the geometry of the mineralisation with respect to the drill hole angle is known, its nature should be reported. If it is not known and only the down hole lengths are reported, there should be a clear statement to this effect (e.g. 'down hole length, true width not known').	No drilling is reported.
Diagram	Appropriate maps and sections (with scales) and tabulations of intercepts should be included for any significant discovery being reported These should include, but not be limited to a plan view of drill hole collar locations and appropriate sectional views.	Appropriate maps and tabulations are contained in the Prospectus.



	Where comprehensive reporting of all Exploration Results is not practicable, representative reporting of both low and high grades and/or widths should be practiced to avoid misleading reporting of Exploration Results.	All significant results are reported.
Other substantive exploration data	Other exploration data, if meaningful and material, should be reported including (but not limited to): geological observations; geophysical survey results; geochemical survey results; bulk samples – size and method of treatment; metallurgical test results; bulk density, groundwater, geotechnical and rock characteristics; potential deleterious or contaminating substances.	No additional substantive exploration data is reported.
Further work	<p>The nature and scale of planned further work (e.g. tests for lateral extensions or depth extensions or large-scale step-out drilling).</p> <p>Diagrams clearly highlighting the areas of possible extensions, including the main geological interpretations and future drilling areas, provided this information is not commercially sensitive.</p>	The future work program will comprise a magnetic survey and shallow drilling to test the grade and continuity of the NW striking quartz vein set identified at surface.



## APPENDIX B: STATUS OF TENURE

Appendix B Table 1: Status of Claims for the Ecrú Project, Nevada

District	Area (km <sup>2</sup> )	Tenement	Grant Date	Expiry Date	Registered Holder/Applicant
Battle Mountain District, Lander County, Nevada, USA	0.084	ECRU 1	23/12/13	1/9/22	Kinetic Gold (US) Inc.
Battle Mountain District, Lander County, Nevada, USA	0.084	ECRU 2	23/12/13	1/9/22	Kinetic Gold (US) Inc.
Battle Mountain District, Lander County, Nevada, USA	0.084	ECRU 3	23/12/13	1/9/22	Kinetic Gold (US) Inc.
Battle Mountain District, Lander County, Nevada, USA	0.084	ECRU 4	23/12/13	1/9/22	Kinetic Gold (US) Inc.
Battle Mountain District, Lander County, Nevada, USA	0.084	ECRU 5	23/12/13	1/9/22	Kinetic Gold (US) Inc.
Battle Mountain District, Lander County, Nevada, USA	0.084	ECRU 6	23/12/13	1/9/22	Kinetic Gold (US) Inc.
Battle Mountain District, Lander County, Nevada, USA	0.084	ECRU 7	23/12/13	1/9/22	Kinetic Gold (US) Inc.
Battle Mountain District, Lander County, Nevada, USA	0.084	ECRU 8	23/12/13	1/9/22	Kinetic Gold (US) Inc.
Battle Mountain District, Lander County, Nevada, USA	0.084	ECRU 9	23/12/13	1/9/22	Kinetic Gold (US) Inc.
Battle Mountain District, Lander County, Nevada, USA	0.084	ECRU 10	23/12/13	1/9/22	Kinetic Gold (US) Inc.
Battle Mountain District, Lander County, Nevada, USA	0.084	ECRU 11	23/12/13	1/9/22	Kinetic Gold (US) Inc.



District	Area (km2)	Tenement	Grant Date	Expiry Date	Registered Holder/Applicant
Battle Mountain District, Lander County, Nevada, USA	0.084	ECRU 12	23/12/13	1/9/22	Kinetic Gold (US) Inc.
Battle Mountain District, Lander County, Nevada, USA	0.084	ECRU 13	23/12/13	1/9/22	Kinetic Gold (US) Inc.
Battle Mountain District, Lander County, Nevada, USA	0.084	ECRU 14	23/12/13	1/9/22	Kinetic Gold (US) Inc.
Battle Mountain District, Lander County, Nevada, USA	0.084	ECRU 15	23/12/13	1/9/22	Kinetic Gold (US) Inc.
Battle Mountain District, Lander County, Nevada, USA	0.084	ECRU 16	23/12/13	1/9/22	Kinetic Gold (US) Inc.
Battle Mountain District, Lander County, Nevada, USA	0.084	ECRU 17	23/12/13	1/9/22	Kinetic Gold (US) Inc.
Battle Mountain District, Lander County, Nevada, USA	0.084	ECRU 18	23/12/13	1/9/22	Kinetic Gold (US) Inc.
Battle Mountain District, Lander County, Nevada, USA	0.084	ECRU 19	23/12/13	1/9/22	Kinetic Gold (US) Inc.
Battle Mountain District, Lander County, Nevada, USA	0.084	ECRU 20	23/12/13	1/9/22	Kinetic Gold (US) Inc.
Battle Mountain District, Lander County, Nevada, USA	0.084	ECRU 21	23/12/13	1/9/22	Kinetic Gold (US) Inc.
Battle Mountain District, Lander County, Nevada, USA	0.084	ECRU 22	23/12/13	1/9/22	Kinetic Gold (US) Inc.
Battle Mountain District, Lander County, Nevada, USA	0.084	ECRU 23	23/12/13	1/9/22	Kinetic Gold (US) Inc.



District	Area (km2)	Tenement	Grant Date	Expiry Date	Registered Holder/Applicant
Battle Mountain District, Lander County, Nevada, USA	0.084	ECRU 24	23/12/13	1/9/22	Kinetic Gold (US) Inc.
Battle Mountain District, Lander County, Nevada, USA	0.084	ECRU 25	23/12/13	1/9/22	Kinetic Gold (US) Inc.
Battle Mountain District, Lander County, Nevada, USA	0.084	ECRU 26	23/12/13	1/9/22	Kinetic Gold (US) Inc.
Battle Mountain District, Lander County, Nevada, USA	0.084	ECRU 27	23/12/13	1/9/22	Kinetic Gold (US) Inc.
Battle Mountain District, Lander County, Nevada, USA	0.084	ECRU 28	23/12/13	1/9/22	Kinetic Gold (US) Inc.
Battle Mountain District, Lander County, Nevada, USA	0.084	ECRU 29	23/12/13	1/9/22	Kinetic Gold (US) Inc.
Battle Mountain District, Lander County, Nevada, USA	0.084	ECRU 30	23/12/13	1/9/22	Kinetic Gold (US) Inc.
Battle Mountain District, Lander County, Nevada, USA	0.084	ECRU 31	23/12/13	1/9/22	Kinetic Gold (US) Inc.
Battle Mountain District, Lander County, Nevada, USA	0.084	ECRU 32	23/12/13	1/9/22	Kinetic Gold (US) Inc.
Battle Mountain District, Lander County, Nevada, USA	0.084	ECRU 33	23/12/13	1/9/22	Kinetic Gold (US) Inc.
Battle Mountain District, Lander County, Nevada, USA	0.084	ECRU 34	23/12/13	1/9/22	Kinetic Gold (US) Inc.
Battle Mountain District, Lander County, Nevada, USA	0.084	ECRU 35	23/12/13	1/9/22	Kinetic Gold (US) Inc.





District	Area (km2)	Tenement	Grant Date	Expiry Date	Registered Holder/Applicant
Battle Mountain District, Lander County, Nevada, USA	0.084	ECRU 36	23/12/13	1/9/22	Kinetic Gold (US) Inc.
Battle Mountain District, Lander County, Nevada, USA	0.084	ECRU 37	23/12/13	1/9/22	Kinetic Gold (US) Inc.
Battle Mountain District, Lander County, Nevada, USA	0.084	ECRU 38	23/12/13	1/9/22	Kinetic Gold (US) Inc.
Battle Mountain District, Lander County, Nevada, USA	0.084	ECRU 39	23/12/13	1/9/22	Kinetic Gold (US) Inc.
Battle Mountain District, Lander County, Nevada, USA	0.084	ECRU 40	23/12/13	1/9/22	Kinetic Gold (US) Inc.
Battle Mountain District, Lander County, Nevada, USA	0.084	ECRU 41	23/12/13	1/9/22	Kinetic Gold (US) Inc.
Battle Mountain District, Lander County, Nevada, USA	0.084	ECRU 42	23/12/13	1/9/22	Kinetic Gold (US) Inc.
Battle Mountain District, Lander County, Nevada, USA	0.084	ECRU 43	23/12/13	1/9/22	Kinetic Gold (US) Inc.
Battle Mountain District, Lander County, Nevada, USA	0.084	ECRU 44	23/12/13	1/9/22	Kinetic Gold (US) Inc.
Battle Mountain District, Lander County, Nevada, USA	0.084	ECRU 45	23/12/13	1/9/22	Kinetic Gold (US) Inc.
Battle Mountain District, Lander County, Nevada, USA	0.084	ECRU 46	23/12/13	1/9/22	Kinetic Gold (US) Inc.
Battle Mountain District, Lander County, Nevada, USA	0.084	ECRU 47	23/12/13	1/9/22	Kinetic Gold (US) Inc.



District	Area (km2)	Tenement	Grant Date	Expiry Date	Registered Holder/Applicant
Battle Mountain District, Lander County, Nevada, USA	0.084	ECRU 48	23/12/13	1/9/22	Kinetic Gold (US) Inc.
Battle Mountain District, Lander County, Nevada, USA	0.084	ECRU 49	23/12/13	1/9/22	Kinetic Gold (US) Inc.
Battle Mountain District, Lander County, Nevada, USA	0.084	ECRU 50	23/12/13	1/9/22	Kinetic Gold (US) Inc.
Battle Mountain District, Lander County, Nevada, USA	0.084	ECRU 51	23/12/13	1/9/22	Kinetic Gold (US) Inc.
Battle Mountain District, Lander County, Nevada, USA	0.084	ECRU 52	23/12/13	1/9/22	Kinetic Gold (US) Inc.
Battle Mountain District, Lander County, Nevada, USA	0.084	ECRU 53	23/12/13	1/9/22	Kinetic Gold (US) Inc.
Battle Mountain District, Lander County, Nevada, USA	0.084	ECRU 54	23/12/13	1/9/22	Kinetic Gold (US) Inc.
Battle Mountain District, Lander County, Nevada, USA	0.084	ECRU 55	23/12/13	1/9/22	Kinetic Gold (US) Inc.
Battle Mountain District, Lander County, Nevada, USA	0.084	ECRU 56	23/12/13	1/9/22	Kinetic Gold (US) Inc.
Battle Mountain District, Lander County, Nevada, USA	0.084	ECRU 57	23/12/13	1/9/22	Kinetic Gold (US) Inc.
Battle Mountain District, Lander County, Nevada, USA	0.084	ECRU 58	23/12/13	1/9/22	Kinetic Gold (US) Inc.
Battle Mountain District, Lander County, Nevada, USA	0.084	ECRU 59	23/12/13	1/9/22	Kinetic Gold (US) Inc.



District	Area (km2)	Tenement	Grant Date	Expiry Date	Registered Holder/Applicant
Battle Mountain District, Lander County, Nevada, USA	0.084	ECRU 60	23/12/13	1/9/22	Kinetic Gold (US) Inc.
Battle Mountain District, Lander County, Nevada, USA	0.084	ECRU 61	23/12/13	1/9/22	Kinetic Gold (US) Inc.
Battle Mountain District, Lander County, Nevada, USA	0.084	ECRU 62	23/12/13	1/9/22	Kinetic Gold (US) Inc.
Battle Mountain District, Lander County, Nevada, USA	0.084	ECRU 63	23/12/13	1/9/22	Kinetic Gold (US) Inc.
Battle Mountain District, Lander County, Nevada, USA	0.084	ECRU 64	23/12/13	1/9/22	Kinetic Gold (US) Inc.
Battle Mountain District, Lander County, Nevada, USA	0.084	ECRU 65	23/12/13	1/9/22	Kinetic Gold (US) Inc.
Battle Mountain District, Lander County, Nevada, USA	0.084	ECRU 66	23/12/13	1/9/22	Kinetic Gold (US) Inc.
Battle Mountain District, Lander County, Nevada, USA	0.084	ECRU 67	23/12/13	1/9/22	Kinetic Gold (US) Inc.
Battle Mountain District, Lander County, Nevada, USA	0.084	ECRU 68	23/12/13	1/9/22	Kinetic Gold (US) Inc.
Battle Mountain District, Lander County, Nevada, USA	0.084	ECRU 69	23/12/13	1/9/22	Kinetic Gold (US) Inc.
Battle Mountain District, Lander County, Nevada, USA	0.084	ECRU 70	23/12/13	1/9/22	Kinetic Gold (US) Inc.
Battle Mountain District, Lander County, Nevada, USA	0.084	ECRU 71	23/12/13	1/9/22	Kinetic Gold (US) Inc.



District	Area (km2)	Tenement	Grant Date	Expiry Date	Registered Holder/Applicant
Battle Mountain District, Lander County, Nevada, USA	0.084	ECRU 72	23/12/13	1/9/22	Kinetic Gold (US) Inc.
Battle Mountain District, Lander County, Nevada, USA	0.084	ECRU 73	23/12/13	1/9/22	Kinetic Gold (US) Inc.
Battle Mountain District, Lander County, Nevada, USA	0.084	ECRU 74	23/12/13	1/9/22	Kinetic Gold (US) Inc.
Battle Mountain District, Lander County, Nevada, USA	0.084	ECRU 75	23/12/13	1/9/22	Kinetic Gold (US) Inc.
Battle Mountain District, Lander County, Nevada, USA	0.084	ECRU 76	23/12/13	1/9/22	Kinetic Gold (US) Inc.
Battle Mountain District, Lander County, Nevada, USA	0.084	ECRU 77	23/12/13	1/9/22	Kinetic Gold (US) Inc.
Battle Mountain District, Lander County, Nevada, USA	0.084	ECRU 78	23/12/13	1/9/22	Kinetic Gold (US) Inc.
Battle Mountain District, Lander County, Nevada, USA	0.084	ECRU 79	23/12/13	1/9/22	Kinetic Gold (US) Inc.
Battle Mountain District, Lander County, Nevada, USA	0.084	ECRU 80	23/12/13	1/9/22	Kinetic Gold (US) Inc.
Battle Mountain District, Lander County, Nevada, USA	0.084	ECRU 81	23/12/13	1/9/22	Kinetic Gold (US) Inc.
Battle Mountain District, Lander County, Nevada, USA	0.084	ECRU 82	23/12/13	1/9/22	Kinetic Gold (US) Inc.
Battle Mountain District, Lander County, Nevada, USA	0.084	ECRU 83	23/12/13	1/9/22	Kinetic Gold (US) Inc.



District	Area (km2)	Tenement	Grant Date	Expiry Date	Registered Holder/Applicant
Battle Mountain District, Lander County, Nevada, USA	0.084	ECRU 84	23/12/13	1/9/22	Kinetic Gold (US) Inc.
Battle Mountain District, Lander County, Nevada, USA	0.084	ECRU 85	23/12/13	1/9/22	Kinetic Gold (US) Inc.
Battle Mountain District, Lander County, Nevada, USA	0.084	ECRU 86	23/12/13	1/9/22	Kinetic Gold (US) Inc.
Battle Mountain District, Lander County, Nevada, USA	0.084	ECRU 87	23/12/13	1/9/22	Kinetic Gold (US) Inc.
Battle Mountain District, Lander County, Nevada, USA	0.084	ECRU 88	23/12/13	1/9/22	Kinetic Gold (US) Inc.
Battle Mountain District, Lander County, Nevada, USA	0.084	ECRU 89	23/12/13	1/9/22	Kinetic Gold (US) Inc.
Battle Mountain District, Lander County, Nevada, USA	0.084	ECRU 90	23/12/13	1/9/22	Kinetic Gold (US) Inc.
Battle Mountain District, Lander County, Nevada, USA	0.084	ECRU 91	23/12/13	1/9/22	Kinetic Gold (US) Inc.
Battle Mountain District, Lander County, Nevada, USA	0.084	ECRU 92	23/12/13	1/9/22	Kinetic Gold (US) Inc.
Battle Mountain District, Lander County, Nevada, USA	0.084	ECRU 93	23/12/13	1/9/22	Kinetic Gold (US) Inc.
Battle Mountain District, Lander County, Nevada, USA	0.084	ECRU 94	23/12/13	1/9/22	Kinetic Gold (US) Inc.
Battle Mountain District, Lander County, Nevada, USA	0.084	ECRU 95	23/12/13	1/9/22	Kinetic Gold (US) Inc.





District	Area (km2)	Tenement	Grant Date	Expiry Date	Registered Holder/Applicant
Battle Mountain District, Lander County, Nevada, USA	0.084	ECRU 96	23/12/13	1/9/22	Kinetic Gold (US) Inc.
Battle Mountain District, Lander County, Nevada, USA	0.084	ECRU 97	23/12/13	1/9/22	Kinetic Gold (US) Inc.
Battle Mountain District, Lander County, Nevada, USA	0.084	ECRU 98	23/12/13	1/9/22	Kinetic Gold (US) Inc.
Battle Mountain District, Lander County, Nevada, USA	0.084	ECRU 99	23/12/13	1/9/22	Kinetic Gold (US) Inc.
Battle Mountain District, Lander County, Nevada, USA	0.084	ECRU 100	23/12/13	1/9/22	Kinetic Gold (US) Inc.
Battle Mountain District, Lander County, Nevada, USA	0.084	ECRU 101	23/12/13	1/9/22	Kinetic Gold (US) Inc.
Battle Mountain District, Lander County, Nevada, USA	0.084	ECRU 102	23/12/13	1/9/22	Kinetic Gold (US) Inc.
Battle Mountain District, Lander County, Nevada, USA	0.084	ECRU 103	23/12/13	1/9/22	Kinetic Gold (US) Inc.
Battle Mountain District, Lander County, Nevada, USA	0.084	ECRU 104	23/12/13	1/9/22	Kinetic Gold (US) Inc.
Battle Mountain District, Lander County, Nevada, USA	0.084	ECRU 105	23/12/13	1/9/22	Kinetic Gold (US) Inc.
Battle Mountain District, Lander County, Nevada, USA	0.084	ECRU 106	23/12/13	1/9/22	Kinetic Gold (US) Inc.
Battle Mountain District, Lander County, Nevada, USA	0.084	ECRU 107	23/12/13	1/9/22	Kinetic Gold (US) Inc.



District	Area (km2)	Tenement	Grant Date	Expiry Date	Registered Holder/Applicant
Battle Mountain District, Lander County, Nevada, USA	0.084	ECRU 108	23/12/13	1/9/22	Kinetic Gold (US) Inc.
Battle Mountain District, Lander County, Nevada, USA	0.084	ECRU 113	23/12/13	1/9/22	Kinetic Gold (US) Inc.
Battle Mountain District, Lander County, Nevada, USA	0.084	ECRU 114	23/12/13	1/9/22	Kinetic Gold (US) Inc.
Battle Mountain District, Lander County, Nevada, USA	0.084	ECRU 115	23/12/13	1/9/22	Kinetic Gold (US) Inc.
Battle Mountain District, Lander County, Nevada, USA	0.084	ECRU 116	23/12/13	1/9/22	Kinetic Gold (US) Inc.



## APPENDIX B: STATUS OF TENURE

Appendix B Table 2: Status of Claims for the Dolly Varden Project, Nevada

District	Area (km2)	Tenement	Grant Date	Expiry Date	Registered Holder/Applicant
Dolly Varden District, Elko County, Nevada, USA	0.084	DV 1	2/10/20	1/9/22	Syncline Consulting LLC
Dolly Varden District, Elko County, Nevada, USA	0.084	DV 2	2/10/20	1/9/22	Syncline Consulting LLC
Dolly Varden District, Elko County, Nevada, USA	0.084	DV 3	2/10/20	1/9/22	Syncline Consulting LLC
Dolly Varden District, Elko County, Nevada, USA	0.084	DV 4	2/10/20	1/9/22	Syncline Consulting LLC
Dolly Varden District, Elko County, Nevada, USA	0.084	DV 5	2/10/20	1/9/22	Syncline Consulting LLC
Dolly Varden District, Elko County, Nevada, USA	0.084	DV 6	2/10/20	1/9/22	Syncline Consulting LLC
Dolly Varden District, Elko County, Nevada, USA	0.084	DV 7	2/10/20	1/9/22	Syncline Consulting LLC
Dolly Varden District, Elko County, Nevada, USA	0.084	DV 8	2/10/20	1/9/22	Syncline Consulting LLC
Dolly Varden District, Elko County, Nevada, USA	0.084	DV 9	2/10/20	1/9/22	Syncline Consulting LLC
Dolly Varden District, Elko County, Nevada, USA	0.084	DV 10	2/10/20	1/9/22	Syncline Consulting LLC
Dolly Varden District, Elko County, Nevada, USA	0.084	DV 11	2/10/20	1/9/22	Syncline Consulting LLC



District	Area (km2)	Tenement	Grant Date	Expiry Date	Registered Holder/Applicant
Dolly Varden District, Elko County, Nevada, USA	0.084	DV 12	2/10/20	1/9/22	Syncline Consulting LLC
Dolly Varden District, Elko County, Nevada, USA	0.084	DV 13	2/10/20	1/9/22	Syncline Consulting LLC
Dolly Varden District, Elko County, Nevada, USA	0.084	DV 14	2/10/20	1/9/22	Syncline Consulting LLC
Dolly Varden District, Elko County, Nevada, USA	0.084	DV 15	2/10/20	1/9/22	Syncline Consulting LLC
Dolly Varden District, Elko County, Nevada, USA	0.084	DV 16	2/10/20	1/9/22	Syncline Consulting LLC
Dolly Varden District, Elko County, Nevada, USA	0.084	DV 17	2/10/20	1/9/22	Syncline Consulting LLC
Dolly Varden District, Elko County, Nevada, USA	0.084	DV 18	2/10/20	1/9/22	Syncline Consulting LLC
Dolly Varden District, Elko County, Nevada, USA	0.084	DV 19	2/10/20	1/9/22	Syncline Consulting LLC
Dolly Varden District, Elko County, Nevada, USA	0.084	DV 20	2/10/20	1/9/22	Syncline Consulting LLC
Dolly Varden District, Elko County, Nevada, USA	0.084	DV 21	2/10/20	1/9/22	Syncline Consulting LLC
Dolly Varden District, Elko County, Nevada, USA	0.084	DV 22	2/10/20	1/9/22	Syncline Consulting LLC
Dolly Varden District, Elko County, Nevada, USA	0.084	DV 23	2/10/20	1/9/22	Syncline Consulting LLC



District	Area (km2)	Tenement	Grant Date	Expiry Date	Registered Holder/Applicant
Dolly Varden District, Elko County, Nevada, USA	0.084	DV 24	2/10/20	1/9/22	Syncline Consulting LLC
Dolly Varden District, Elko County, Nevada, USA	0.084	DV 25	2/10/20	1/9/22	Syncline Consulting LLC
Dolly Varden District, Elko County, Nevada, USA	0.084	DV 26	2/10/20	1/9/22	Syncline Consulting LLC
Dolly Varden District, Elko County, Nevada, USA	0.084	DV 27	2/10/20	1/9/22	Syncline Consulting LLC
Dolly Varden District, Elko County, Nevada, USA	0.084	DV 28	2/10/20	1/9/22	Syncline Consulting LLC
Dolly Varden District, Elko County, Nevada, USA	0.084	DV 29	2/10/20	1/9/22	Syncline Consulting LLC
Dolly Varden District, Elko County, Nevada, USA	0.084	DV 30	2/10/20	1/9/22	Syncline Consulting LLC
Dolly Varden District, Elko County, Nevada, USA	Each claim is 0.084	DV 31 - DV 255	23/4/21	1/9/22	Lamarck Exploration LLC





## APPENDIX B: STATUS OF TENURE

Appendix B Table 3: Status of Claims for the Bedonia East Project, Western Australia

Tenement	Registered Holder/Applicant	Shares Held	Grant Date (Application date)	Expiry Date	Area Size	Annual Rent (Next rental year)	Min Annual Expenditure
E63/1828	Ardea Exploration Pty Ltd	100/100	12.10.2017	11.10.2022	70BL	\$16,660	Previous Tenement Year to 11/10/20 - \$70,000 Current Tenement Year to 11/10/21 - \$105,000
E63/1856	Ardea Exploration Pty Ltd	100/100	19.02.2018	18.02.2023	7BL	\$1,666	Previous Tenement Year to 18/02/20 - \$20,000 Current Tenement Year to 18/02/21 - \$20,000
E63/1857	Ardea Exploration Pty Ltd	100/100	19.02.2018	18.02.2023	21BL	\$4,998	Previous Tenement Year to 18/02/20 - \$21,000 Current Tenement Year to 18/02/21 - \$21,000
E63/1928	Ardea Exploration Pty Ltd	100/100	29.07.2019	28.07.2024	4BL	\$564	Previous Tenement Year to 27/07/20 - \$15,000 Current Tenement Year to 28/07/21 - \$15,000
ELA28/3083	Ardea Exploration Pty Ltd	100/100	(11.01.2021)	N/A (application is pending)	2BL	N/A	N/A





# MONEGHETTI

## MINERALS